

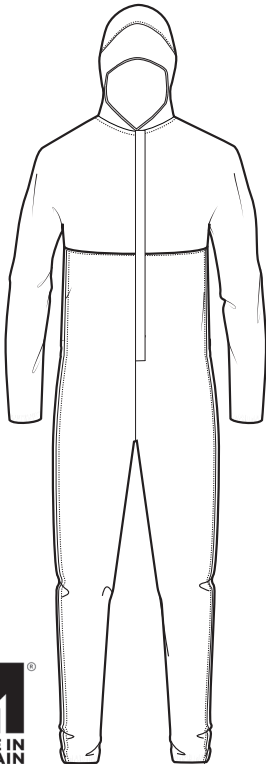
# ORVECARE DISPOSABLE COVERALL c/w HOOD

## INSTRUCTIONS FOR USE

Date: 02/02/2021

Rev: 1

Rev date: 02/02/2021



### Coverall performance

The Orvecare coverall is manufactured from a polypropylene laminate comprising a fibrous spunbond nonwoven and liquid repellent film. The fabric is a durable thermally bonded nonwoven material.

This garment and/or fabric are not flame resistant and should not be used around heat, open flame, sparks or in potentially flammable environments.

Coverall tested to and complies with the requirements of the following standards;

### Whole suit performance:

- BS EN ISO 13982-1:2004+A1:2010 - Type 5: Protective clothing for use against solid particles - Complies with the requirements  
 $L_{jmn}, 82/90 \leq 30\%$  and  $L_{S}, 8/10 \leq 15\%$
- EN 13034:2005+A1:2009 - Type 6: Protective clothing - Offering limited protection performance against liquid chemical - Complies with the requirements
- ISO 17491-4:2008 - Method A - Low level spray test – Pass

### Fabric performance:

- Tested and classified according to EN 14325:2018
- BS EN ISO 3071:2006 - pH of Aqueous Extract - Pass
- BS EN ISO 13935 Part2:2014 - Seam Strength - Class 2
- BS EN ISO 13934-1:2013 - Tensile Strength - Class 1
- ISO 12947-2 (2016) - Abrasion - Class 2

- ISO 6530 (2005) - Protection Against Liquid Chemicals - Sulphuric Acid 30% (Repellency Class 3, Penetration Class 3), Sodium Hydroxide 10% (Repellency Class 3, Penetration Class 3), O-Xylene (Repellency Class 2, Penetration Class 3), Butan-1-ol (Repellency Class 2, Penetration Class 3)
- ISO 9073-3 (1997) - Tearing Resistance - Class 2
- EN 863 (1995) - Puncture Resistance - Class 1
- EN ISO 7854:1997 (2015) - Flex Cracking Resistance – Class 3

### Composition:

- Overall with hood, front zip fastening with over-flap. Elastic cuffs and ankles.
- Material: 53gsm Polypropylene laminate (35gsm Spunbond Polypropylene + 18gsm Liquid repellent PE film).

### Product model(s):

- **ORV+DW10N+04 – M**
- **ORV+DW10N+05 – L**
- **ORV+DW10N+01 – XL**
- **ORV+DW10N+06 – XXL**

### Protection levels and applications

The coveralls have been designed and manufactured to offer the wearer a level of protection as set out in the afore mentioned standards.

The coveralls are manufactured to offer protection from dry particulates and low hazard spray, the material is abrasion resistant. The nonwoven layer is soft to the touch.

The coverall is suitable for use in certain healthcare applications, veterinary services, spray painting, powder coating, food processing, production line service and repair, cleaning of plant, equipment and machinery.

### Description of use:

- Maintenance of swimming pools
- Workshops
- Nautical
- Handling particles: fiberglass, toxic dust, asbestos, etc
- Cleaning
- Painting with brushes
- Low hazard chemical products... in warm atmospheres or with physical exertion producing heat stress

### Risks against which the product is designed to protect

This coverall is designed to protect workers from hazardous substances, or sensitive products and processes from contamination by people. It is typically used, depending on chemical toxicity and exposure conditions, for protection against fine particles (Type 5) and limited liquid splashes or sprays (Type 6).

A full-face mask with filter appropriate for the exposure conditions and tightly connected to the hood and additional taping around the hood, cuffs, ankles and zipper flap are required to achieve the claimed protection.

### Limitations of use

Prior to use the wearer should review all instructions and inspect the coverall for any damage that may affect its levels of protection. Check for holes, damaged seams and fastenings. Any damaged

(Continues overleaf..)

coveralls should not be used and replaced.

If the coverall becomes damaged or contaminated during use it should be removed in the appropriated manner and replaced.

If the coveralls are to be used in conjunction with other forms of PPE for "full" protection then it is necessary to ensure cuffs are taped to gloves, ankles are taped to boots and the hood is taped to the respirator.

The zip should be secured in place using the self-adhesive tape and over taped for full protection.

It should be noted that no garment will provide complete protection against all hazardous substances, when choosing the Orvecare coverall it is the responsibility of the user to ensure the suitability of the product.

This instruction for use provides information on this coverall. Wearer should read these instructions for use.

Resistance to ignition was not tested on this coverall. Flammable material, keep away from fire.

Full-body protection "types" achieved by this coverall defined by the European standards for chemical protective clothing: EN ISO 13982-1:2004 + A1:2010 (Type 5) and EN 13034:2005 + A1:2009 (Type 6).

### Prolonged Wear

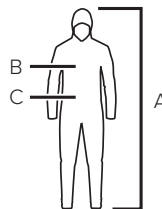
Prolonged wearing of coveralls may cause heat stress. Absorbent undergarments, cooled garments, alternation of work and rest period may help reduce the risk of heat stress.

### Removing contaminated coveralls

Care should be taken so as not to self-contaminate with any hazardous substance during removal. If coveralls are contaminated the appropriate decontamination procedures need to be followed.

### Sizing guide

Sizing pictogram indicates body measurements (cm) & correlation to letter code. Check your body measurements and select the correct size.



Measurements (cm)

Item No.	Size	A = Body Height	B = Chest	C = Waist
ORV+DW10N+04	M	170-176	90-100	84-92
ORV+DW10N+05	L	176-182	100-108	92-100
ORV+DW10N+01	XL	182-188	108-116	100-108
ORV+DW10N+06	XXL	188-194	116-124	108-116

### Storage & disposal

The garments have an expected shelf life of 5 years from date of manufacture provided that they are stored out of direct sunlight in a cool and dry room.

Used coveralls should be disposed of in line with the organizations waste management protocols.

Disposal of contaminated garments is regulated by national or local laws.

### Approvals

These products are type examined by SGS Fimko Oy, Notified Body number 0598 with annual conformity to type assessment certification by SGS and audited annually by SGS, Notified Body number 0598.

These products are CE marked as Category III PPE to the European Regulation EU 2016/425 by SGS Fimko Oy, Takomotie 8, FI - 00380, Helsinki, Finland, Notified Body number 0598. EU declaration of conformity is available on: [info@orvecare.com](mailto:info@orvecare.com).

### Label markings/symbol

- Coverall manufacturer
- Body sizing visual
- Garment size
- Date of manufacture MM/YY
- Coverall measurements
- CE Marking approval by SGS (0598)
- Type 5: Protective clothing for use against solid particulates (EN ISO 13982-1:2004+A1:2010)
- Type 6: Protective clothing - offering limited protection performance against liquid chemicals (EN 13034:2005+A1:2009)
- Read instruction sheet prior to use
- Do not wash
- Do not iron
- Do not tumble dry
- Do not dry clean
- Do not reuse
- Flammable. Keep away from fire.
- EC Rep details

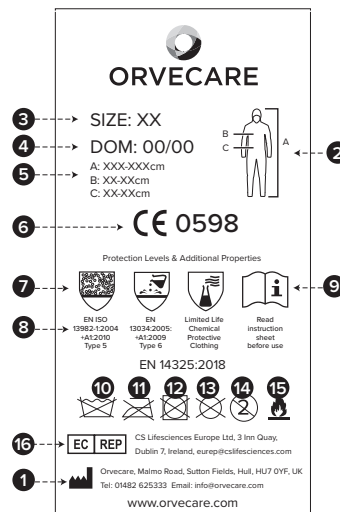
### Notes

Orvecare Coveralls are manufactured under BS EN ISO 9001.

In the unlikely event of defects please do not use the garment. The defective garment should be returned (unused and uncontaminated) to the seller.

The manufacturer disclaims all warranties not specifically stated in the product packaging and is not responsible for the improper use of the product. For questions please contact the Orvecare team.

**EC Authorised Representative details: CS Lifesciences Europe Ltd, 3 Inn Quay, Dublin 7, Ireland, [eurep@cslifesciences.com](mailto:eurep@cslifesciences.com)**



**ORVECARE**  
Orvecare

(a division of Orvec International Limited)  
**Malmo Road, Sutton Fields Industrial Estate, Hull,**  
**HU7 0YF United Kingdom**  
**t - +44 (0) 1482 625 333**  
**e - [service@orvecare.com](mailto:service@orvecare.com)**